

A smiling woman with curly hair is the central focus, holding a drink on a silver tray. The tray also contains a tall glass of coffee, a smaller glass with a drink and whipped cream, and a small white object. The background is a warm, golden light with vertical lines, possibly from blinds. The word 'advantage' is written in large, bold, yellow lowercase letters across the middle of the image. Overlaid on this is the text 'DRINK MACHINE ADVANCE' in bold, black, uppercase letters.

advantage

DRINK MACHINE ADVANCE

Advance performance beverage blender

The logo for Vita-Mix, featuring a red square with a white stylized 'V' and the text 'Vita-Mix' in white, with 'FOODSERVICE' in black below it.

Vita-Mix
FOODSERVICE

All business.
Higher profits.



6 programs
with unlimited
recipe options.
Perfection is one
click away.



MORNING START-UP SMOOTHIE

1 banana

4 oz. / 113 g peaches

4 oz. / 120 ml apple juice

2 oz. / 56 g strawberries

Add ingredients into the Vita-Mix 32 oz. / 0.9 Ltr.

XP Container. Select #5 on the Drink Machine

Advance and push the Start/Stop switch.

Pour into a glass and garnish with strawberry.

What a way to start your day!

yield: approx. 16 oz. / 480 ml

Start your day with customers lining up at the door.

Advantage: Vita-Mix.

Offer frozen coffee drinks in the hot summer months. They're tall, cool and delicious.

**Advantage:
Vita-Mix.**



FROZEN MOCHA

6 oz. / 180 ml espresso

5 oz. / 150 ml half and half or light cream

4 oz. / 120 ml mocha powder

32 oz. / 960 ml ice

Pour coffee, half and half and mocha powder into the Vita-Mix 32 oz. / 0.9 Ltr. XP Container. Add ice. Select #3 on the Drink Machine Advance and push the Start/Stop switch. Pour into 4 mugs and cover with whipped cream. Drizzle caramel syrup on top.

yield: 32 oz. / 900 ml



Frozen bliss,
glass after glass.
Customers just
keep coming back.

Heavy-duty motor designed specifically for demanding smoothie and coffee shop operations

Optional programmer for large scale operations

XP Container is designed to pull ingredients through blades and reduce the blend time

The Drink Machine handles capacities from 4 oz. / 120 ml to full capacity with no compromise in consistency

Measurement markings are easy to read for better accuracy

Our patented blade design creates a stronger vortex to continuously circulate the ingredients for perfect blending

Pulse control for quick drink refresh

6 programs with auto shut-off for increased performance

Easy access On/Off switch

Lighted Start/Stop switch

Easy On/Off flexible rubber lid

Removable plug lets you add ingredients while blending

It's not only more powerful, but over 20% quieter than other commercial blenders on the market today.

Advantage: Vita-Mix.

A 12 oz. / 360 ml banana-strawberry-apple smoothie blended with just 28 cents worth of ingredients typically retails for US \$4.00. **Advantage: Vita-Mix.**

Our patented blade and container provide the best blended drinks in the industry. **Advantage: Vita-Mix.**

A fresh fruit smoothie is not only more appealing to a health conscious customer, but it can demand a higher price than a more traditional beverage.

Advantage: Vita-Mix.

With the performance of the Drink Machine Advance, you can add more than just fruit to your recipes. Frozen fruit and candy treats can jazz up your product offerings, and add to your profits as well.

Advantage: Vita-Mix.

Quickly and easily prepare the drinks you are accustomed to making with less time and effort.

Advantage: Vita-Mix.

With the Drink Machine Advance, you have the flexibility to easily change your menu anytime you need to keep it fresh and exciting.

Advantage: Vita-Mix.

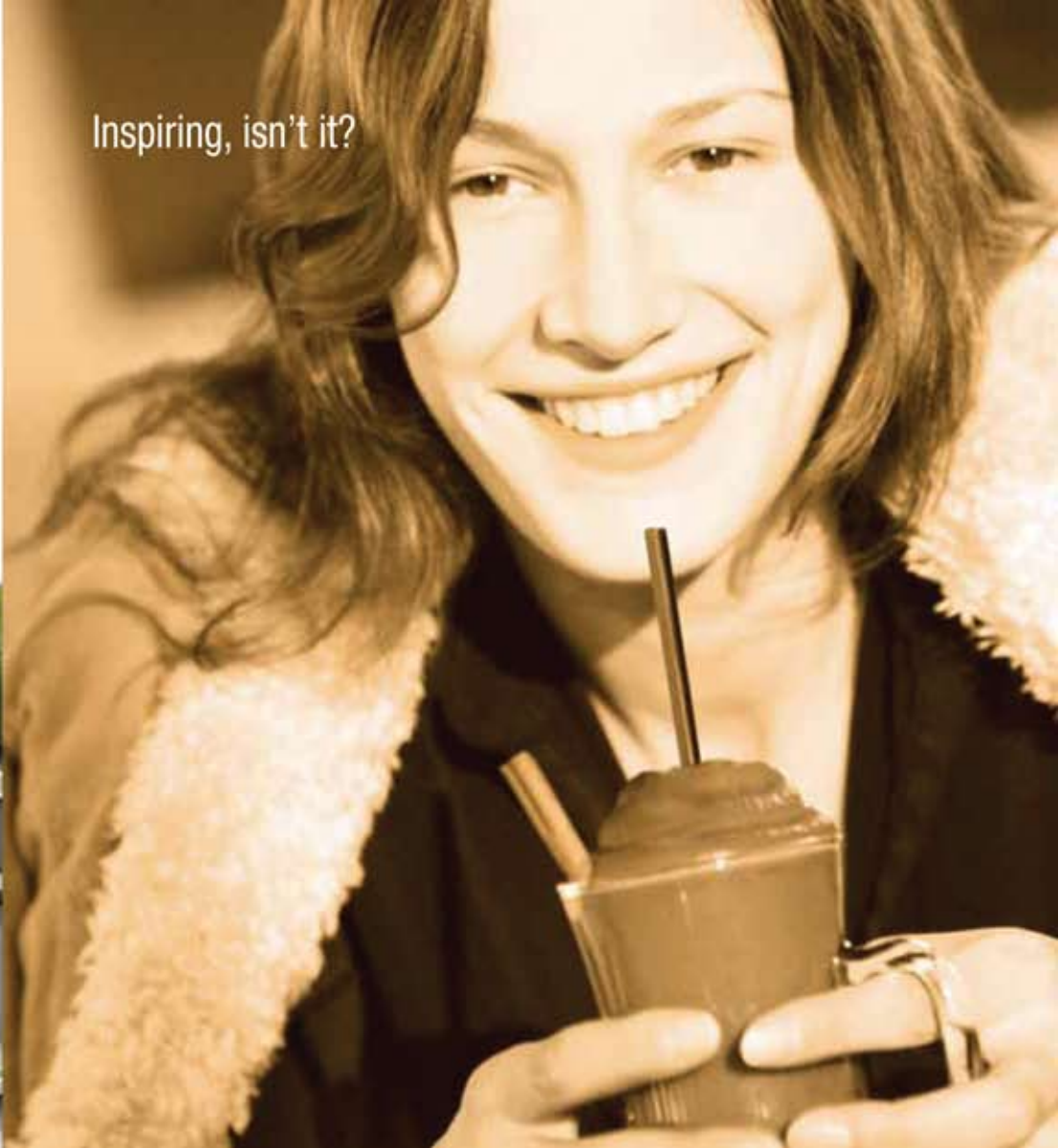
A group of five young adults are gathered around a table, laughing and socializing. In the foreground, a woman with long dark hair is laughing heartily, her hand on her chest. To her left, a woman in a blue tank top is laughing and looking upwards. In the background, a man is laughing with his hand on his head, and two other women are also laughing. The table in front of them has several drinks, including a pink smoothie and an orange juice, with straws. The setting appears to be a casual dining or social space with a striped tablecloth.

**IT'S NOT ABOUT BLENDERS,
IT'S ABOUT YOU.**

Frozen coffees and teas,
granitas, smoothies or margaritas –
why do you think we call it the Drink Machine?



Inspiring, isn't it?



OPEN

See the demo.
Get tech specs. Check out the commercials.

www.vitamix.com/foodservice/drinkmachine

800-4DRINK4



FOODSERVICE

For a Dealer near you, contact Vita-Mix:
US and Canada and Latin America:

PHONE: 440-235-0214

FAX: 440-235-9670

EMAIL: foodservice@vitamix.com

All other countries:

TEL: +1.440.782.2450

FAX: +1.440.782.2220

EMAIL: international@vitamix.com

PRODUCT INFORMATION AND SPECIFICATIONS

BLENDER	ITEM #	MODEL #	DETAILS	CONTAINER	BLADE	ELECTRICAL
Drink Machine Advance	5062	VM0100A	Pre-programmed with 6 Programs ; fully programmable (Software Kit #15606 needed); pulse switch and automatic shut-off; silver base	32 oz./0.9 Ltr. polycarbonate stackable XP Container	XP Blade	120V , 50/60 Hz, 11.5 A
Drink Machine Advance	10126	VM0100C	Pre-programmed with 6 Programs ; fully programmable (Software Kit #15606 needed); pulse switch and automatic shut-off; silver base	0.9 Ltr./32 oz. polycarbonate stackable XP Container	XP Blade	120V EMC , 50/60 Hz, 11.5 A
Drink Machine Advance	10116	VM0110A	Pre-programmed with 6 Programs ; fully programmable (Software Kit #15606 needed); pulse switch and automatic shut-off; silver base	0.9 Ltr./32 oz. polycarbonate stackable XP Container	XP Blade	100V , 50/60 Hz, 900 Watts
Drink Machine Advance	10106	VM0127	Pre-programmed with 6 Programs ; fully programmable (Software Kit #15606 needed); pulse switch and automatic shut-off; silver base	0.9 Ltr./32 oz. polycarbonate stackable XP Container	XP Blade	220-240V , 50/60 Hz, 750-850 Watts

Bare Motor: 2+ peak HP motor (varies by voltage)

Certifications:  Where applicable

Pack: 1 per standard pack

Carton Dimensions: 13.1 in./33.3 cm High x 11.9 in./30.2 cm Wide x 16.9 in./42.9 cm Deep

Weight: 13 lbs. / 5.9 kg

Case Cube: 1.5 cu. ft. / 0.04 cu. m

WARRANTY AND SERVICE CONTRACT

In the United States and Canada, the Vita-Mix Drink Machine is backed by a three-year warranty against defects in parts and workmanship and includes a one-year service contract. Other warranties apply outside the United States and Canada. Contact your local Vita-Mix Distributor for details or details or telephone +1.440.782.2450 for a distributor near you.



DRINK MACHINE ACCESSORIES

Compact Container for smaller batches.
Order #15640



Getting started is easy.
Instant POP Blending Kiosk™
Order #18009



Tough yet gentle, loosen stuck-on particles with the Container Brush.
Order #15639



No more dirty containers stacked in the sink. Rinse-o-matic®
Order #1410



