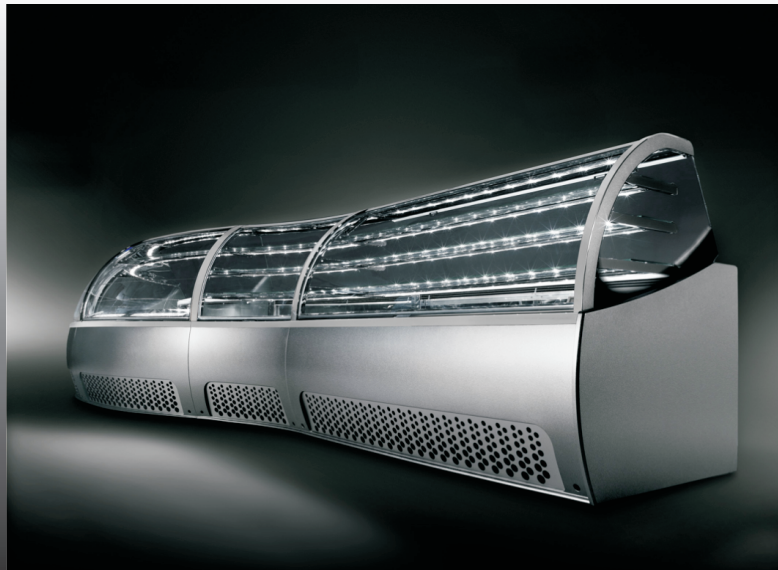


SPACE 2 | SPACE 3

BID SPECIFICATIONS



SPACE 3 PASTRY - Chrome

SPACE 2 | SPACE 3 PASTRY

Pastry display cabinet with fan ventilated refrigeration on lower deck and upper shelves.

Available in two models:

Space 2 with 2 shelves (total h. 4' 4");

Space 3 with 3 shelves (total h. 4' 9")

One piece body with ecological polyurethane insulation. Display base, working top and rear panel in stainless steel 18 gauge AISI 304, external base in painted sheet. Upper structure with aluminium uprights and tempered glass with energy saving anti fog heating system. Front glass with pistons lift-up opening system. Light heading in silver-colored anodized aluminium. Neon lighting standard or LED (option). Closure on the operator side with sliding doors or self-retracting curtain (option). Main structure and frame in carbon steel painted with epoxy powder. Adjustable feet or pivoting castors as optional. Control board on the operator side and digital temperature repeater. Oversized evaporator coil to reduce food dehydration.

Front and side panels customizable upon request



STANDARD FEATURES

Energy Efficient

Automatic evaporator probe activated Electric defrost system. Large evaporator finned evaporator to maintain humidity level upon display surfaces.

High Performance

One piece molded body using 3' ecologic polyurethane insulation. Climatic class 4 (+86 F / 55% R.H.)

Defrosting System

Electric Defrost. Two control systems: manual or automatic (standard).

Power

High Performance condensing unit with hermetic compressor.

Temperature Equalized

Oversized finned evaporator. Product holding / display area is fan ventilated back to front air flow system to ensure equalized consistent temperature.

OPTIONS

LIGHTING

LED lighting (top + shelf)

CASTORS

Pivoting castors (2 with brake)

CONDENSING SYSTEM

Water cooled condensing system. Remote condensing unit

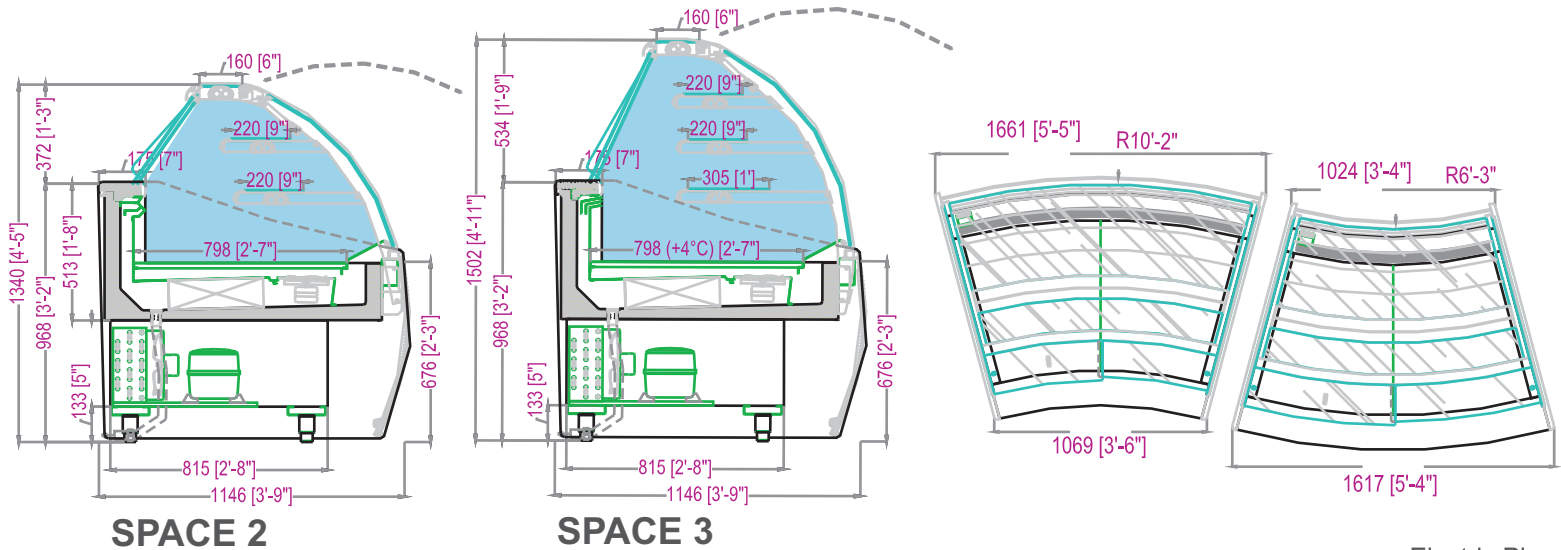
EVAPORATION SYSTEM

Electric heated condensate pan

PACKAGING

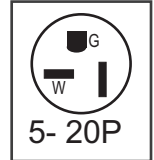
Reinforced wood crate

SPEC SHEET



SPACE Cross Sections

Electric Plug



KEY INFORMATION

TECHNICAL FEATURES		111	161	210	AE 30°	AI 30°
External dimensions SP2 (lxdxh) [#]	inches	3' 11" x 3' 9" x 4' 5"	5' 7" x 3' 9" x 4' 5"	7' 10" x 3' 9" x 4' 5"	5' 5" x 3' 9" x 4' 5"	3' 4" x 3' 9" x 4' 5"
External dimensions SP3 (lxdxh) [#]	inches	3' 11" x 3' 9" x 4' 11"	5' 7" x 3' 9" x 4' 11"	7' 10" x 3' 9" x 4' 11"	5' 5" x 3' 9" x 4' 11"	3' 4" x 3' 9" x 4' 11"
Crated dimensions SP2 (lxdxh) [#]	inches	4' 7" x 4' 6" x 5'	6' 5" x 4' 6" x 5'	8' 5" x 4' 6" x 5'	6' x 4' 6" x 5'	6' x 4' 6" x 5'
Crated dimensions SP3 (lxdxh) [#]	inches	4' 7" x 4' 6" x 5' 6"	6' 5" x 4' 6" x 5' 6"	8' 5" x 4' 6" x 5' 6"	6' x 4' 6" x 5' 6"	6' x 4' 6" x 5' 6"
Refrigeration	type	Fan Ventilated	Fan Ventilated	Fan Ventilated	Fan Ventilated	Fan Ventilated
Refrigerated display area	type	deck + shelves	deck + shelves	deck + shelves	deck	deck
Operating temperature	F°	35	35	35	35	35
Compressor (2 3)	type - N°	Hermetic - 1	Hermetic - 1	Hermetic - 1	Hermetic - 1	Hermetic - 1
Compressor (Pw H*-pw) (2 3)	W - HP					
Power supply (2 3)	V-Ph-Hz	120 / 1 / 60	120 / 1 / 60	120 / 1 / 60	120 / 1 / 60	110 / 1 / 60
Electrical input (standard) (2 3)	W-A					
Defrost	mode / type	Automatic / Electric	Automatic / Electric	Automatic / Electric	Automatic / Electric	Automatic / Electric
Climatic class	N°	4	4	4	4	4
Operating conditions	F° - %HR	86 / 55	86 / 55	86 / 55	86 / 55	86 / 55
Refrigerant	type	R404A	R404A	R404A	R404A	R404A
Net weight (2 3)	Lb	462	626	789	650	650
Crated weight (2 3)	Lb	772	1000	1230	1050	1050

The company reserves the right to make modifications to the products without prior notice.

* ASHRAE 32 condition

With Aesthetic panels

U.S.A. Distributor



UpperMidwestGourmet.com
1901 Traffic Street NE
Minneapolis MN 55413
612.728.7208

CIAM S.p.A.